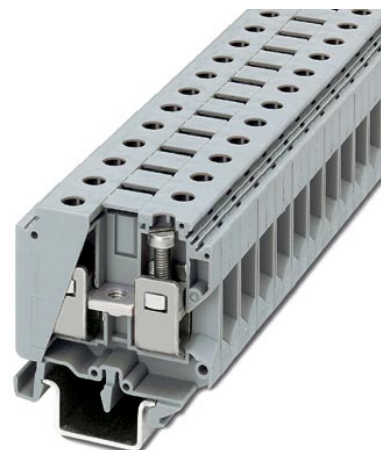


UKH 25

Order No.: 3009011



<http://eshop.phoenixcontact.de/phoenix/treeViewClick.do?UID=3009011>

Universal terminal block with screw connection, cross section: 10 - 25 mm², AWG: 6 - 4, width: 15 mm, color: Gray

Commercial data

EAN	4017918091606
Pack	10 Pcs.
Customs tariff	85369010
Weight/Piece	0.06278 KG

Product notes

WEEE/RoHS-compliant since:
08/10/2005



<http://www.download.phoenixcontact.com>
Please note that the data given here has been taken from the online catalog. For comprehensive information and data, please refer to the user documentation. The General Terms and Conditions of Use apply to Internet downloads.

Technical data

General

Number of levels	1
Number of connections	2
Color	gray

Insulating material	PA
Inflammability class acc. to UL 94	V0

Dimensions

Width	15 mm
Length	57.5 mm
Height NS 35/15	65 mm
Height NS 32	63 mm

Technical data

Rated surge voltage	8 kV
Pollution degree	3
Surge voltage category	III
Insulating material group	I
Connection in acc. with standard	IEC / EN
Nominal current I_N	108 A
Nominal voltage U_N	1000 V
Open side panel	nein

Connection data

Conductor cross section solid min.	6 mm ²
Conductor cross section solid max.	25 mm ²
Conductor cross section stranded min.	10 mm ²
Conductor cross section stranded max.	25 mm ²
Conductor cross section AWG/kcmil min.	10
Conductor cross section AWG/kcmil max	3
Conductor cross section stranded, with ferrule without plastic sleeve min.	4 mm ²
Conductor cross section stranded, with ferrule without plastic sleeve max.	25 mm ²
Conductor cross section stranded, with ferrule with plastic sleeve min.	4 mm ²
Conductor cross section stranded, with ferrule with plastic sleeve max.	25 mm ²
2 conductors with same cross section, solid min.	2.5 mm ²
2 conductors with same cross section, solid max.	10 mm ²
2 conductors with same cross section, stranded min.	4 mm ²

2 conductors with same cross section, stranded max.	10 mm ²
2 conductors with same cross section, stranded, ferrules without plastic sleeve, min.	2.5 mm ²
2 conductors with same cross section, stranded, ferrules without plastic sleeve, max.	10 mm ²
Type of connection	Screw connection
Stripping length	17 mm
Internal cylindrical gage	B8
Screw thread	M 5
Tightening torque, min	4 Nm
Tightening torque max	4.5 Nm

Certificates / Approvals

Approval logo



CSA

Nominal voltage U _N	600 V
Nominal current I _N	100 A
AWG/kcmil	6-4

UL

Nominal voltage U _N	600 V
Nominal current I _N	85 A
AWG/kcmil	6-4
Certification	BV, CSA, DNV, GL, GOST, KEMA, LR, RS, UL

Accessories

Item	Designation	Description
------	-------------	-------------

Assembly

1201442	E/UK	End clamp, for supporting the electronic base. If mounted vertically, 2 end clamps are required in each case
1201028	NS 32 AL UNPERF 2000MM	G rail 32 mm (NS 32)

1201002	NS 32 PERF 2000MM	G-profile DIN rail, material: Steel, perforated, height 15 mm, width 32 mm, length 2 m
1201015	NS 32 UNPERF 2000MM	G-profile DIN rail, material: Steel, unperforated, height 15 mm, width 32 mm, length 2 m
0801733	NS 35/ 7,5 PERF 2000MM	DIN rail, material: Steel, perforated, height 7.5 mm, width 35 mm, length: 2 m
0801681	NS 35/ 7,5 UNPERF 2000MM	DIN rail, material: Steel, unperforated, height 7.5 mm, width 35 mm, length: 2 m
1201756	NS 35/15 AL UNPERF 2000MM	DIN rail, deep-drawn, high profile, unperforated, 1.5 mm thick, material: Aluminum, height 15 mm, width 35 mm, length 2 m

Bridges

0201333	FBI 2-15	Fixed bridge, for cross connections, with screws, screw heads without insulation, 2-pos.
0201278	FBI 3-15	Fixed bridge, for cross connections, with screws, screw heads without insulation, 3-pos.

Marking

3009024	WS 3/4-UKH 50/25	Warning plate, with 2 plastic screws, across 3 UKH 50 or 4 UKH 25 terminal blocks, pitch: 15 mm
3009037	WS 4/5-UKH 50/25	Warning plate, with 2 plastic screws, across 4 UKH 50 or 5 UKH 25 terminal blocks, pitch: 15 mm
1050525	ZB10:SO/CMS	Zack strip, 10-section, divisible, special printing, marking according to customer requirements

Address

PHOENIX CONTACT Inc., USA
586 Fulling Mill Road
Middletown, PA 17057, USA
Phone (800) 888-7388
Fax (717) 944-1625
<http://www.phoenixcon.com>



© 2008 Phoenix Contact
Technical modifications reserved;